

PRODEO 

MOVING FORWARD CREATING VALUE

CAPABILITY
STATEMENT

BACKGROUND



PROJECT IMPLEMENTATION SPECIALISTS

Founded by a team of seasoned professionals with extensive experience ranging from junior engineer to senior management roles, **PRODEO** is well-equipped to undertake the delivery of multidisciplinary mining and process plant projects. Our team's diverse range of skills and expertise provides our clients with exceptional value by applying practical knowledge gained from shopfloor to boardroom.



EXECUTION EXPERIENCE

With a wealth of personal project knowledge and high-level of **construction experience**, we are adept at addressing **strategic business issues** and effectively communicating with personnel at all levels to gather and share information. Our resulting recommendations are delivered as practical working systems and processes, which continue to add value to our clients' businesses for many years to come.



RESULTS-DRIVEN PHILOSOPHY

Early involvement from our experts will improve project outcomes as we are well-versed in lean design, procurement, and contracting strategies. Our **results-driven philosophy** towards project management, execution, commissioning, and handover ensures successful project completion.



MULTIDISCIPLINARY CAPABILITIES

Leveraging our strong technical knowledge, we bring unique solutions to the mining industry's most complex challenges, adding value across the entire project lifecycle. Our clients benefit from tailored project management packages that address all aspects of their project, thanks to our **multidisciplinary capabilities**.

ABSOLUTE SATISFACTION

We will collaborate with clients like no other business to guarantee your **absolute satisfaction**. We're as inquisitive as we are ingenious. We work with clients in a variety of markets and locations throughout the world.

BESPOKE SOLUTIONS

We are committed to safety and **providing bespoke** design solutions through a complete project management strategy that prioritizes quality assurance.



YOUR PROJECT PARTNER



This enables us to constantly meet our clients' needs while proactively mitigating risks. We bring vital engineering experience, technological competence, and design skills to the table, drawing on our extensive knowledge base. Then we pay special attention and listen carefully.

Others miss out on opportunities, possibilities, and potential when we can see them as we know where to look.

We partner with our clients to re-imagine, shape, and design a better future using a variety of unique creative processes and skills.

MEET OUR CLIENTS' NEEDS

WE SEE POTENTIAL

OUR CLIENTS

We cater to a **diverse clientele**, including junior mining companies in the pre-development phase as well as medium to large companies with brownfields expansion projects in their portfolio. Our clients seek technical expertise to help them implement, adapt, and optimize the value of their project.



Our focus is on **delivering exceptional services and exceeding client expectations**, and we believe that this commitment to excellence is what leads to long-term partnerships and repeat business. Clients often develop long-lasting relationships with us, and we are honored to consider many of them as our friends.



We are your trusted partner in project development and expansion solutions. Whether you're a junior mining company embarking on your first project or a mid-tier client pursuing plant expansion initiatives, we understand the unique challenges and opportunities that lie ahead. Our comprehensive suite of services is tailored to cater to clients across all stages of development, ensuring seamless project execution from inception to completion.

Partner with PRODEO today and unlock the full potential of your projects, as we pave the way for your success in the ever-evolving global market.



At PRODEO we don't just engineer projects; we engineer success stories. Partner with us to turn your mineral sector vision into a thriving reality.

OUR CLIENTS

CLIENTS

WHERE WE OPERATE

OUR WORLD OF PROJECTS



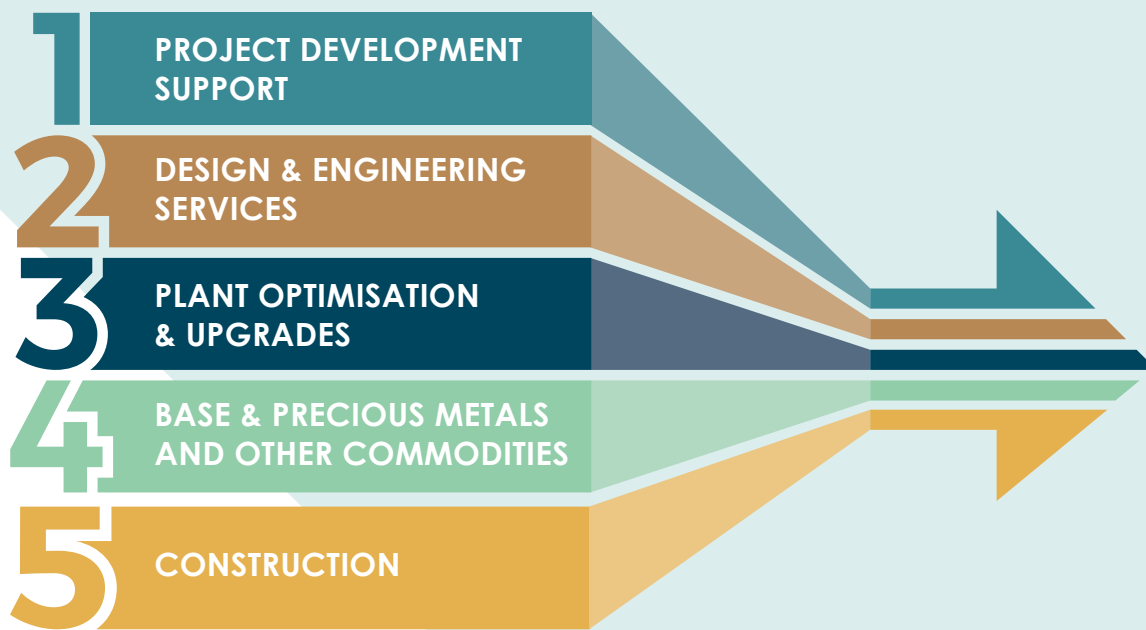
PRODEO

MOVING FORWARD CREATING VALUE

"I believe it is in our nature to explore, to reach out into the unknown. The only true failure would be not to explore at all." - Ernest Shackleton



CORE SERVICES



CORE SERVICES

PROJECT DELIVERY - MINERALS PROCESSING

At **PRODEO**, we redefine the landscape of process plant design and delivery. With a team of seasoned professionals at the helm, we possess a wealth of experience ranging from junior engineering roles to senior management positions. This depth of expertise empowers us to deliver unmatched excellence in every project we undertake.

Our unique strength lies in our ability to seamlessly blend practical knowledge gained from the shop floor with strategic insights from the boardroom. This holistic approach ensures that our process plant and infrastructure solutions are not only technically sound but also align with the broader business goals. From initial concept to final construction, we infuse each stage with innovation, precision, and a commitment to delivering tangible value.

We pride ourselves on being pioneers in lean design principles, optimizing procurement strategies, and implementing cutting-edge construction techniques. This not only accelerates project timelines but also drives cost-efficiency and sustainability. By choosing **PRODEO**, clients are investing in a partner that doesn't just construct Process Plant – we construct the foundation for long-term success in the ever-evolving landscape of process plant industries.

PROJECT DEVELOPMENT SUPPORT

PRODEO's agility and extensive global experience, combined with our collaborative approach, enable us to take a broad perspective when executing or reviewing a study. This approach facilitates informed decision-making at the early stages of a project, ensuring that time and resources are directed towards high-value areas. We strive to provide our clients with the right information to make informed decisions that align with their corporate goals and values. From inception to completion, we've guided numerous clients through the intricate stages of scoping, pre-feasibility, and definitive level studies, including the critical bankable studies crucial for project financing. Our study work, characterized by innovative design concepts, has been the catalyst for numerous projects transitioning seamlessly from planning to construction and successful operation.

DESIGN AND ENGINEERING SERVICES

PRODEO aims to solidify its position as the premier choice for critical minerals projects on the African continent. With an unwavering commitment to excellence, we are poised to revolutionize the industry through our unmatched expertise, innovative solutions, and global reach. Our track record of successful ventures in diverse regions, combined with our cutting-edge technical prowess, sets us apart as the ultimate destination for critical minerals projects.

At **PRODEO**, we understand the strategic importance of these minerals in powering modern technologies and industries. With a dynamic and adaptable approach, we navigate complex challenges with finesse, ensuring project success from inception to completion.

PLANT OPTIMISATION AND UPGRADES

When the stakes are high and operations must continue uninterrupted, **PRODEO** stands as your unwavering partner in executing stay-in-business projects. At **PRODEO**, we recognize that these projects demand a unique blend of expertise – the ability to seamlessly integrate essential upgrades or modifications while operations persist. Our purpose-driven approach hinges on delivering solutions that not only maintain operational continuity but enhance efficiency and safety as well. We excel in effective communication and collaboration with your team at all levels, ensuring a smooth alignment of objectives and minimal disruption. Whether it's optimizing processes, ensuring compliance, or enhancing safety measures, **PRODEO's** solutions are anchored in real-world practicality and innovative thinking.

BASE & PRECIOUS METALS AND OTHER COMMODITIES

In the dynamic realm of minerals and metals, **PRODEO** stands as your trusted partner, consistently driving breakthrough results across a spectrum of solutions. Our unparalleled expertise, especially in copper and gold, sets us apart, with a track record that includes pioneering benchmark projects worldwide. We thrive on pushing design boundaries, leveraging our agility to craft tailor-made solutions that adapt to the ever-changing market landscape.

Our prowess extends to various commodities, encompassing precious and base metals, as well as ferrous metals. From Copper to Graphite, industrial Minerals to iron Ore, and beyond to Lithium, Mineral Sands, Precious Metals, Uranium, and Zinc, our experience covers the entire spectrum.

CONSTRUCTION

What sets us apart is our access to a highly skilled team of on-site construction experts.

This team includes seasoned project managers, engineers, and technicians who have years of experience working in Africa's unique environments.

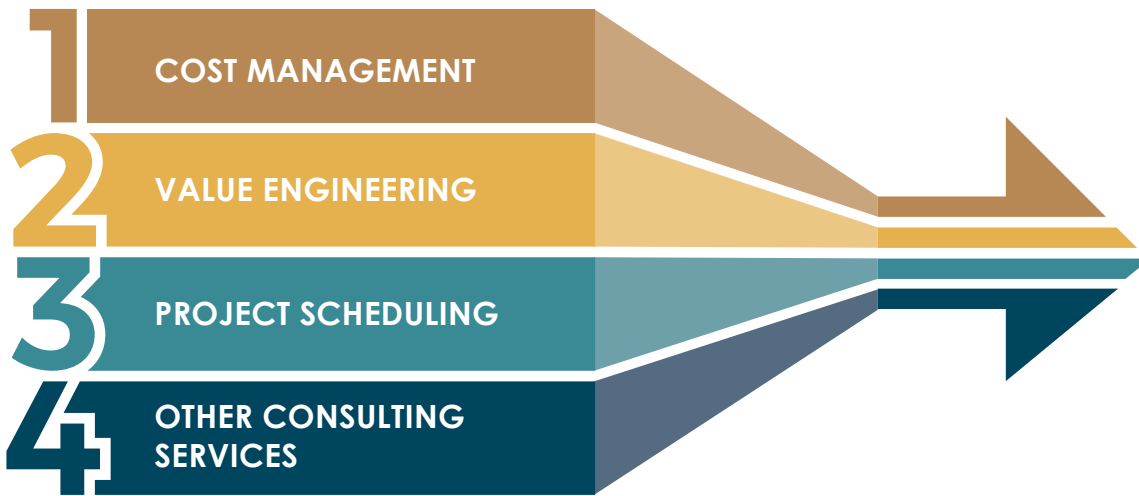
They bring:

- Deep knowledge of local regulations and compliance requirements.
- Expertise in risk assessment and mitigation strategies tailored to the region.
- Exceptional problem-solving skills, ensuring minimal delays and cost overruns.

Our on-site teams work collaboratively with local stakeholders, ensuring that projects are executed efficiently and with respect for the local communities and environments.



OUR SECONDARY SERVICES



PRODEO offers the following services aimed at supporting the owner's team or performing as the owner's team where the client's project is not yet mature enough to justify a full- time owner's team.

COST MANAGEMENT

PRODEO's team are industry leaders in compilation of complex Capital cost estimates, from desktop study level through to the establishment and management of control budget estimates.

We have previously managed and executed large capital project up to USD2bn in value, involving projects of varying size and complexity for clients in many different industries.

While undertaking such work, we have been exposed to a variety of project regimes and are therefore uniquely positioned to assist clients with their capital expenditure process. We further believe that it is of critical importance to integrate detailed project schedules into the capital management process.

PRODEO's capex management process is benefits focused, developed to monitor a projects 'expenditure on a practical level, and ensuring that cost reports inform the project manager and customer alike.

VALUE ENGINEERING

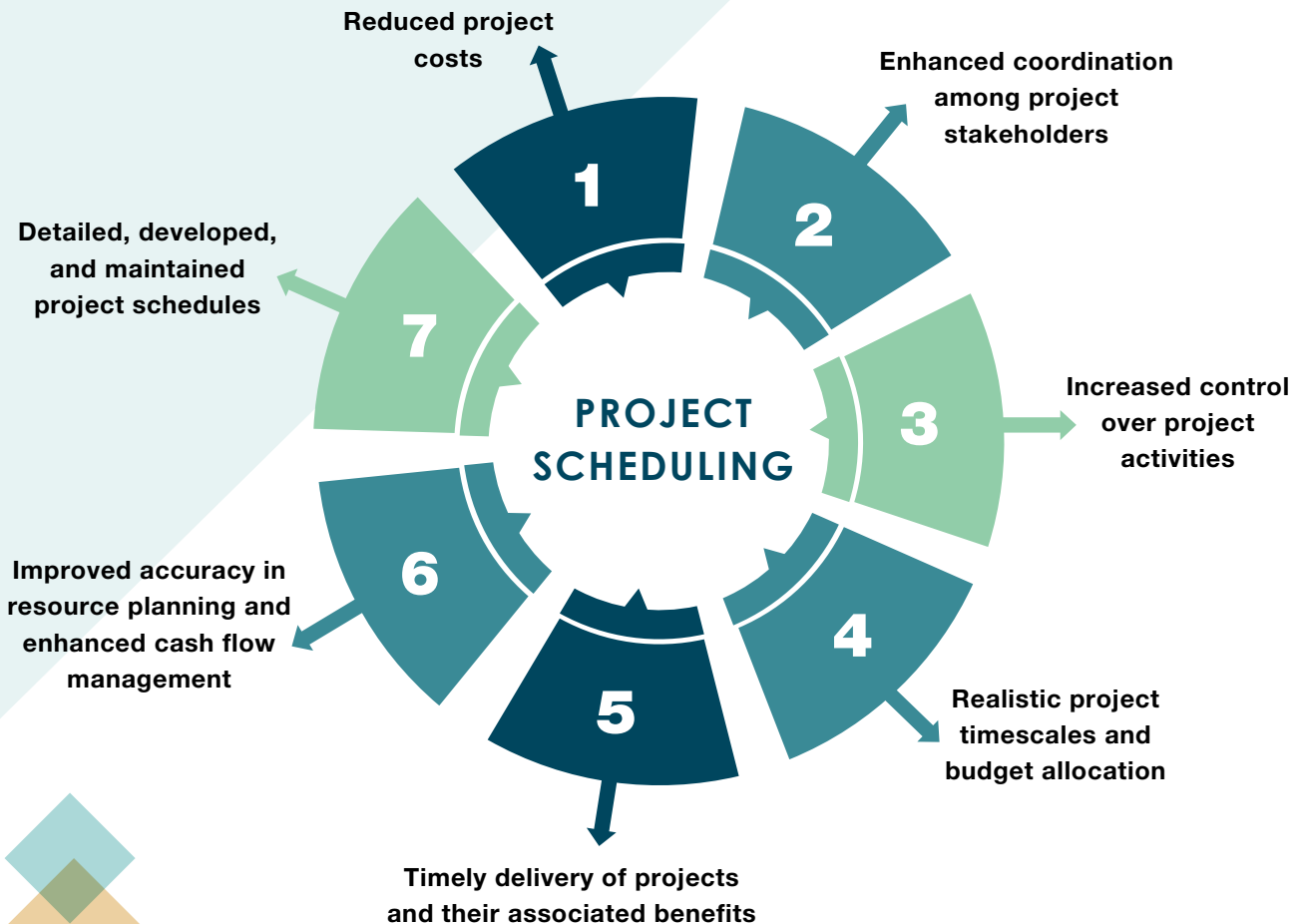
PRODEO's team possesses extensive experience from various continents, having worked in diverse climatic conditions. This experience is leveraged during design and model reviews, allowing us to engage with the engineering team and conduct value engineering. Our comprehensive review process involves raising pertinent questions, which encourages the engineering team to explore innovative solutions and ultimately enhances the project's overall value.

OUR SECONDARY SERVICES

PROJECT SCHEDULING

At our company, we consider project planning to be a crucial project management technique that is essential for the successful delivery of projects. Our planning and support services are designed to deliver the following benefits:

- In the construction management sphere, we coordinate all site activities.
- We issue instructions to contractors.
- Value the works.
- Issue certificates and payment schedules.
- Control variations.
- Resolve disputes.
- Ensure the contract is adhered to and the project objectives are met.



OTHER CONSULTING SERVICES



DUE DILIGENCE

- ✓ Project implementation plan
- ✓ Project execution plan
- ✓ Process design
- ✓ Capital cost
- ✓ Operational cost
- ✓ Construction philosophy



PROJECT MANAGEMENT SERVICES - OWNER'S TEAM

- ✓ Owner representation during engineering project execution
- ✓ Owner inspection and expediting services
- ✓ Project master planning, delivery plans and feasibility studies
- ✓ Project management plans
- ✓ Principal Project Requirements plans
- ✓ Manage the concept and detailed design stage
- ✓ Manage the development of the technical specifications and detailed scope of works
- ✓ Provide recommendations for experienced builders and contractors
- ✓ Managing the tender process and analysis of the responses
- ✓ Construction stage project management regarding cost, quality and program
- ✓ Management of the project commissioning, certification, and defect liability period
- ✓ Facilitating 'Value Management' initiatives



CONSTRUCTABILITY REVIEWS

- ✓ Schedule
- ✓ Construction costs
- ✓ Finding schedule opportunities
- ✓ Finding cost opportunities
- ✓ Reporting to owner technical steering committee to highlight impacts and opportunities
- ✓ Facilitate workshops for brainstorming execution impacts and opportunities





CAREER / EXPERIENCE SUMMARY

Hugo is a **Mechanical Engineer** (University of Pretoria) with more than **30 years of experience** in the Mining and Minerals industry.

- 1993** Hugo spent the **first 10 years of his career in mining operations**, during which time he gained experience in open pit mining, process plant operations, maintenance as well as in brownfields and greenfields expansion projects.
- 2003** In 2003, Hugo joined **Senet** in Johannesburg. Early on Hugo managed a handful of Gold projects in diverse West African countries such as Ghana, Guinea and Ivory Coast.
- 2006** In 2006 Hugo was involved in a management buy - out at Senet and was duly appointed as a **Project Director**.
- 2012** In 2012 Hugo was promoted to **Managing Director**, a position he held until 2018. **During his tenure Senet experienced exceptional growth**, including the establishment of a world class Hydromet capability at Senet that coincided with the execution of many successful Copper and Cobalt projects in the DRC and Zambia as well.
- 2018** After six years at the helm at Senet Hugo stepped down as MD and took on a supporting role as **Operations Director** at the company.
- 2021** Towards the end of 2021 Hugo had achieved all his ambitions at Senet and retired after 18 years at the company. After a sabbatical of a few months, it was time for new challenges and more exciting adventures and **PRODEO** was formed.



Hugo fosters a **relentless work ethic** and believes that forming trusting relationships in industry is critical to the **success** of any business.

- +27 82 856 4737
- h.swart@prodeoconsult.co.za
- www.prodeoconsult.co.za

Hugo Swart, BEng (Mechanical Engineering) University of Pretoria.
Founder of **PRODEO**.



CAREER / EXPERIENCE SUMMARY

Tyrone has **15 years' experience** in projects; from conceptual design through to project execution, as well as in plant operations; with process management, control, and continuous process improvement across a range of commodities.

- 2009 Junior Process Engineer/ Process Controller** at Geratech Zirconium Beneficiation. Oversaw pilot plant operations and supported process engineering activities.
- 2010 Process Engineer** at Consulmet Metals. Managed test work and DFS for Chaarat Gold Tulkubash Project. Delivered feasibility studies, process design, commissioning for gold and rutile recovery projects.
- 2014 Process Engineer & Metallurgist** at Grand Cote Operations. Commissioned Wet Concentrator Plant, led optimisation projects, and achieved >2% THM recovery increase through scavenger recovery project. Trained local metallurgical technicians and solved technical plant issues.
- 2021 Process Design Engineer** (Subcontracted to VZI Gamsberg) at Consulmet SA. Audited and scoped improvement projects for Vedanta Zinc International's Gamsberg Operation. Delivered design calculations, PFDs, P&IDs, mass balances, and HAZOP studies. Tyrone was also an Independent Consultant at Chemtallurgy. Provided short-term process improvement engineering services. Supported clients with targeted technical solutions and optimisation initiatives.
- 2022 Senior Process Engineer** (FEED Team) at ProProcess. Directed FEL 2/3 studies for cobalt retreatment, copper SX, and reagent neutralisation. Delivered large-scale design packages under tight schedules. Provided process engineering services for zinc concentrator improvement projects.
- 2023 Director / Principal Process Engineer** at Compass Process & Projects. Compass was formed to fill the void between engineering design houses and operating or emerging processing plants. Representing the owners team, Compass provided the baseline design required to get the project/s scoped properly, tendered on by the best candidates and adjudicated based on sound project principles. Managing international contractors and design institutes to ensure project success.
- 2026 Principal Process Engineer** at **PRODEO**, driving process engineering strategy across feasibility studies, major capital investments, and brownfield projects. Tyrone oversees the delivery of high quality, practical process designs that meet project requirements while enabling efficient implementation and operation. His role extends to advising on mining and minerals processing, conducting due diligence to ensure project success, and shaping feasibility studies that inform critical business and investment decisions.



Tyrone is a **results-driven professional** with integrity, perseverance, and loyalty. Strong technical expertise with proven ability to lead and collaborate under pressure. Passionate about **adding value**, he is driven to assist clients in realising their processing goals.

+27 84 911 1766

t.dawson@prodeconsult.co.za

www.prodeconsult.co.za

Tyrone Dawson, N.Dip (Metallurgical Engineering) Tshwane University of Technology,
BTech (Metallurgical Engineering) Tshwane University of Technology,

ABOUT



CAREER / EXPERIENCE SUMMARY

Marius has been a **Construction Manager** at Senet DRA since 2009 and had previously worked with Senet on various other construction and supervision roles. He has over **26 years of success overseeing all phases** of multimillion – dollar construction projects and a proven history of on-time, on-budget and high-quality project completions.

1993 Marius started his career with **De Beers Finsch Diamond mine** in South Africa Northern Cape Dec 1993. Over the period of 3 years following an intense training program Marius gained experience with all the diamond production and underground / process plant construction departments. Under trackless mining production department training was done with underground development / production drilling / production blasting & production loading and hauling sections. Underground / Surface Mining and process plant construction departments provided the backbone and background that guided Marius into his construction career to date.

1997 In 1997 Marius joined Senet Projects as an artisan to construct a Heap Leach gold process plant for **Ashanti Gold** in Guinea West Africa. The opportunity provide growing space and Marius stayed on the project to construct the First and Second phase of the project ending in a supervisory role managing SMPP teams.

2002 From 2002 onwards Marius worked in a **SMPP supervisory role** on the following projects.

2003 2002 to 2003 Diamond Jig and DMS plants for ORYX in DRC

2004 2004 to 2006 SIGUIRI Anglo Ashanti Au CIL/CIP EPCM process plant construction

2006 2006 to 2008 LERO Guinor Au CIL/CIP EPCM process plant construction

2008 2008 Simandou RIO-TINTO Fe304 Opencast Crushing EPCM project in Guinea

2009 During the construction from 2009 onwards at **Bisha Au CIL / CIP EPCM project in Eritrea** Marius was promoted to **Construction Manager**. The project continued till end 2014 with Cu Flotation and Zn Flotation expansions.

Marius managed as an onsite construction manager the following projects.

2014 2014 to 2015 Modular Process EPCM Tungsten process plant for RHA in Zimbabwe

2015 2015 to 2016 Heap Leach EPCM Gold Project at Karma in Burkina Faso

2016 2016 to 2017 CIL EPCM Gold Process Plant at Yanfolila Mali

2018 2018 to 2020 Cu Flotation plant at Kitwe Zambia

2020 2020 to 2022 Au CIL process plant at Mandiana Guinea

2022 2022 to 2023 Oxygen Plant at Sadiola Mali

Marius possesses a unique set of skills that greatly enhance the construction projects he manages, primarily due to his **exceptional flexibility**. His ability to adapt to rapidly changing circumstances and unforeseen challenges sets him apart. This agility allows him to make quick decisions and implement effective solutions, ensuring that projects stay on track despite any hurdles. His combination of quick adaptability, **innovative thinking**, and effective leadership makes his leadership an indispensable part of any construction project, guaranteeing success and efficiency.

+27 82 213 7682

m.simpson@prodeoconsult.co.za

www.prodeoconsult.co.za



Marius Simpson, N4

Engineers Drawings, INTEC



CAREER / EXPERIENCE SUMMARY

Wayne has **over 25 years' post-diploma experience** in the industrial, mining and materials handling sectors. Wayne started his career with a trade as an aircraft technician.

- 1987** Wayne then moved into the **hydraulic industry** in 1987 in a technical role.
- 1998** In 1998 Wayne started a **hydraulics engineering supply, design, and manufacturing company Denquip Systems** with partners, the company's core business was in the industrial, mining and materials handling sectors. This entailed design and coordination with the clients' design teams and integration with the end users through to erection and commissioning.
- 2008** In 2008 an international hydraulic company bought Denquip Systems and Wayne moved into a **consulting role** offering his services to his clients.
- 2011** In 2011 **Senet** which was one of Wayne's key clients approached him to join them in a project support role, over the next 10 years Wayne operated in various disciplines within the company. One of Wayne's key functions was interaction with clients from the design side to construction, commissioning, and operations.
- 2021** Wayne eventually became **Vice President Project Support** at Senet. In November 2021 Wayne left Senet to focus on finding a career option that would better suit his family requirements.



With Wayne's career background he is comfortable **interacting with clients** - from the artisans in operations to directors in the boardroom. This gives Wayne a **unique ability** to review a project's execution strategy and to identify high impact interventions.

Wayne is a **committed individual** who has a passion for his career selection, Wayne believes your strength in life is honesty and your name. **To this extent he develops trusting and long-lasting relationships with clients that are long standing.**

- +27 73 339 7330
- w.dodgen@prodeoconsult.co.za
- www.prodeoconsult.co.za

Wayne Dodgen, N6 (Mechanical Engineering Related Technologies/Technicians), Kempton Park Technical College.
 Founder of **PRODEO.**





CAREER / EXPERIENCE SUMMARY

Nick's impressive academic background includes a **Masters Degree in Chemical Engineering**. Furthermore, he stands as a registered engineer with ECSA (Engineering Council of South Africa) and holds the esteemed title of a Fellow of the SAIMM (Southern African Institute of Mining and Metallurgy). Nick's legacy in the industry is etched through his involvement in the process design of numerous large and intricate processing plants, guiding them from the conceptual phase through to successful implementation and commissioning.

- 2001** Nick's professional journey commenced in 2001 when he embarked on his career at **Bateman**. Initially starting as a **Process Engineer**, he rapidly climbed the ranks, achieving the status of **Senior Process Engineer** by 2006. During this period, Nick's contributions as a Commissioning Engineer and Process Engineer were pivotal in the field of Precious Group Metals (PGMs), as well as base metals such as Copper, Cobalt, and Nickel, alongside Uranium processing facilities.
- 2009** In 2009, Nick transitioned to **SNC-Lavalin**, where he assumed the role of **Senior Process Engineer**. Here, he spearheaded crucial projects as the Lead Process Engineer, specializing in flotation and hydrometallurgical facilities, particularly for Copper, Cobalt, Uranium, and Gold refining.
- 2013** 2013 marked a significant milestone as Nick was promoted to the position of **Process Manager**. During this period, he provided invaluable technical process support for mining projects and studies while also playing a pivotal role in business development and proposal generation.
- 2015** In 2015, Nick embarked on a new chapter, joining Senet as a **Principal Process Engineer**. Here, he assumed the role of Lead Process Engineer on significant projects encompassing copper-cobalt, gold, rare earths, and manganese processing facilities, showcasing his versatility and adaptability in diverse settings.
- 2023** In 2023, Nick has transitioned to **DRA Global**, where he held the position of **Process Manager - Hydrometallurgy**, demonstrating his enduring commitment to excellence and expertise in the field.
- 2023** In the latter part of 2023, Nick assumed a pivotal role at **PRODEO**, where he is leading the **strategic initiative** aimed at positioning **PRODEO** as a prominent service provider for bespoke **Hydrometallurgical projects** within the region.



With an impressive career spanning over two decades, Nick has honed his **expertise** in a wide array of areas including Process Engineering, Process Development, Study Management, Project Execution, and Commissioning. His **wealth of knowledge** was primarily cultivated within the dynamic landscape of the hydrometallurgical industry.

+27 82 662 5926

n.dempers@prodeoconsult.co.za

www.prodeoconsult.co.za

Nick Dempers, BCom (Business Administration and Management), UNISA; MSc (Chemical Engineering), University of Cape Town.



CAREER / EXPERIENCE SUMMARY

Erns is an accomplished **Mechanical Engineering Professional** with considerable experience in project management, project development, design, construction, commissioning, and maintenance of significant multimillion-dollar capital projects within the EPC, EPCM and operational mining environment. Zero harm focused with outstanding project performance management skills and expertise within all phases of the project lifecycle.

- 2007** Erns joined Ventura Engineering as **Mechanical Engineer**, designing and analysing of various cooling system solutions for buildings, earthmoving equipment, and armoured vehicles. This involved fan selections, heat transfer calculations and flow analysis.
- 2010** In 2010, Erns joined SENET as a **Mechanical Project Engineer**. During his time at SENET, Erns successfully managed the completion of feasibility studies, FEED, EPC and EPCM contracts for various process plants in remote parts of Africa, focussing on high levels of stakeholder satisfaction and exceeding customer expectations.
- 2013** One of Erns' career highlights include acting as **Lead Project Engineer** on the Kipoi Copper plant in the DRC. Erns managed the design, procurement, and construction of this plant under a lump sum turnkey contract. The plant was completed under budget and ahead of schedule - 15 months from start of design to handover of commissioned plant.
- 2017** In 2017, Erns was appointed as **Project Manager** at CRS Water in Australia. Erns successfully managed the design, procurement, and construction of a 1.9ML/day water treatment plant for the M4 East WestConnex tunnel project in Sydney, ahead of schedule and within budget.
- 2019** **Statutory Mechanical Engineer** for the processing plant at Yancoal's Mount Thorley Warkworth mine in New South Wales. Responsible for managing up to 15 projects every year, ranging between \$300,000 and \$15 million each, which includes regulatory compliance projects, safety initiative implementation, equipment replacement and plant upgrades.

With **extensive international experience** in greenfield and brownfield projects, Erns seamlessly combines his hands-on operational expertise with the design and management of complex projects. Guided by precision, innovation, and leadership, Erns delivers **excellence in every solution**.



- +27 63 154 3899
- e.hattingh@prodeoconsult.co.za
- www.prodeoconsult.co.za

Erns Hattingh, BEng (Mechanical Engineering) University of Pretoria, **MEng (Project Management)** University of Pretoria, **AdvDip (Plant Engineering)** Engineering Institute of Technology.



CAREER / EXPERIENCE SUMMARY

Collin is an accomplished **EC&I engineering leader** with a track record of delivering over 19 major mining and process plant projects across Africa and the Middle East. Expert in standardising engineering procedures, design frameworks, and vendor qualification models, while maintaining a zero LTI record on all site assignments. Skilled in FAT/SAT programs, risk assessments, and client technical reviews, with a reputation for strong stakeholder relationships and consistent project delivery.

2006 Electrical Engineer at Mott MacDonald. He designed and implemented MV/LV electrical systems for Transnet Capital Projects, delivering engineering design, supervision, and commissioning for 11–33 kV distribution networks, substations, and MCCs. Collin ensured compliance with NEC 3 and ISO standards through site inspections, QA, and contractor verification, while supporting construction and commissioning with FAT/SAT programs. Key achievements include delivering electrical scope for the Port of Ngqura Container Terminal, Durban Pier 1 Expansion, and King Rest Marshalling Yard. I also helped establish standardised design templates adopted across the Hatch Mott MacDonald Goba JV, consistently maintaining safety, quality, and compliance under tight schedules.

2010 Principal Electrical Engineer at SENET. Collin directed EC&I scope for major mining projects across Africa from feasibility through commissioning. He developed and standardised engineering procedures, specifications, and QA/QC frameworks, while designing and integrating electrical power systems, control architecture, and instrumentation for mineral processing plants. Managing multidisciplinary teams and overseeing contractor performance, he ensured seamless project execution, shutdown planning, and plant upgrades. Key achievements include delivering numerous concurrent EC&I projects, enhancing efficiency through standardised documentation, maintaining a zero-harm safety record, and consistently meeting performance, cost, and schedule objectives that reinforced SENET's EPCM reputation.

2025 As **EC&I Manager** at **PRODEO**, he leads the design and execution of electrical, control, and instrumentation systems across EPCM and EPC projects, including feasibility studies, detailed design, brownfield upgrades, and large-scale process plants. Collin ensures strict compliance with schedules, budgets, and technical standards while maintaining the highest levels of safety and quality. His role involves driving innovative, cost-efficient engineering solutions that improve plant reliability, energy efficiency, and sustainability. In addition, he provides consulting expertise in electrical and automation systems, conduct technical due diligence and design verification, and contribute strategic input to feasibility studies and concept designs.



Collin is a **safety-driven engineering leader passionate** about delivering complex mining and process projects to world-class standards. Over the past 15+ years, he has successfully led copper, gold, and uranium projects across Africa and the Middle East, guiding teams through every stage - from concept and feasibility to design, construction, and commissioning.

+27 78 376 1650

c.govender@prodeoconsult.co.za

www.prodeoconsult.co.za

Collin Govender, N.Dip (Power Engineering - Electrical),
Durban University of Technology



PRODEO

MOVING FORWARD CREATING VALUE

HUGO SWART

📞 +27 82 856 4737

✉️ h.swart@prodeoconsult.co.za

ERNS HATTINGH

📞 +27 63 154 3899

✉️ e.hattingh@prodeoconsult.co.za

TYRONE DAWSON

📞 +27 84 911 1766

✉️ t.dawson@prodeoconsult.co.za

COLLIN GOVENDER

📞 +27 78 376 1650

✉️ c.govender@prodeoconsult.co.za

WAYNE DODGEN

📞 +27 73 339 7330

✉️ w.dodgen@prodeoconsult.co.za

MARIUS SIMPSON

📞 +27 82 213 7682

✉️ m.simpson@prodeoconsult.co.za

NICK DEMPERS

📞 +27 82 662 5926

✉️ n.dempers@prodeoconsult.co.za

🌐 www.prodeoconsult.co.za

